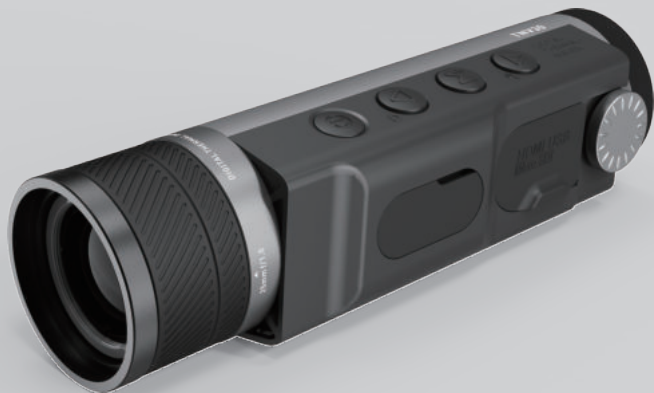


MILESEEY®



MONOCULAR THERMAL IMAGING NIGHT VISION DEVICE

User Manual



| | |
|----------------|-------|
| English | 01-11 |
| Deutsche | 12-22 |
| Français | 23-33 |
| Italiano | 34-44 |
| Español | 45-55 |

Product Overview

Thank you for purchasing and using Mileseeey monocular thermal night vision. Please read the manual carefully before using.

Mileseeey TNV30 is a hand-held night vision with advanced passive infrared thermal imaging technology. TNV30 can be used normally during the day and night , with functions such as hot tracking and photographing. It obtains 5 imaging mode of white heat, black heat, red heat, green heat and iron heat, which can meet the observation needs of different scenarios.

TNV 30 is internally installed with an infrared detector with 384x288 dpi, and an OLED screen. The device also adopts special DDE imaging enhancement technology, making the imaging clearer and more delicate. The detecting range of TNV30 is 400 meters, and the magnification can be 1X, 2X, 4X and 8X.

TNV30 possesses super long battery life of 16 hours, and it has the firm appearance with IP65 and 1m dropping resistance. It is therefore an excellent auxiliary means for observing and searching in outdoors.

Safety instructions



In order to ensure the safe use of the product, please use the product in accordance with the instructions. Otherwise there will be no free warranty after the product is damaged.



If the product breaks down or is damaged, please do not disassemble the device for maintenance. Please contact the local dealer or our company for maintenance in time.



Please clean the device with wet cloth or weak soap solution. Do not use abrasive, isopropanol or solvent to clean the device housing, lens and interfaces.



Please do not use this device in flammable, explosive, steam, humid or corrosive environment.

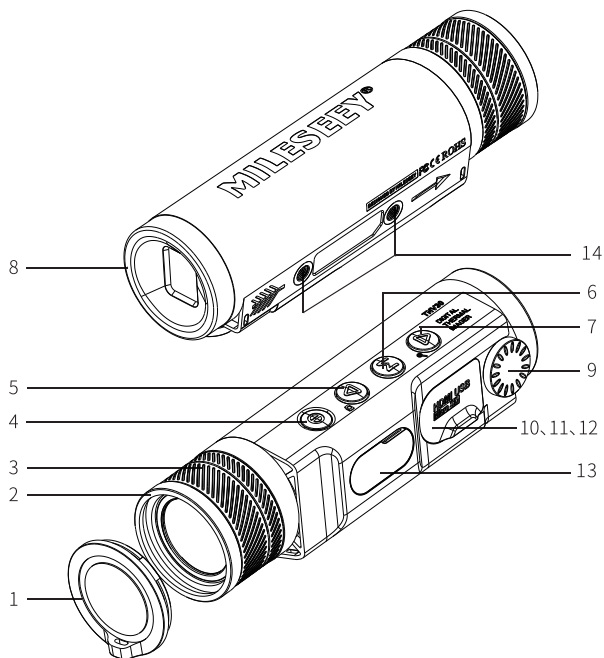


Do not aim the lens at the sun, laser and other high-energy light sources; otherwise it will cause irreversible physical damage to the lens or thermal imaging detector.



The device has a built-in lithium battery. Please charge it in the environment of 0 °C - 40 °C; otherwise the charging function will be turned off automatically.

Appearance



1.Lens Protector**2.Objective Lens Rotary Knob****3.Objective Lens****4.Power Button**

Long press to power on/ off;

Short press for range measurement (carried with range measurement module only).

5.Photograph Button

Short press to save the image.

6.Mode Button

Short press to switch imaging modes.

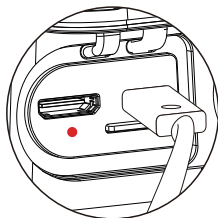
7.Magnification Button

Short press for electronic magnification of 1X, 2X, 4X, 8X;

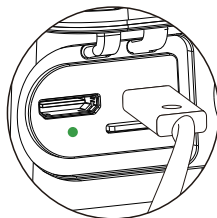
8.Eyepiece**9.Eyepiece Rotary Knob****10.Micro SD Card Port****11.Mini HDMI Port****12.Type-C Port****13.Range Measurement Module Port****14.Hand-Held Screen Frame/Tripod Port**

Charging

This device uses large capacity 4500mAh lithium battery. The electric quantity is shown on the top right corner of the screen when the the device is powered on. When the device is on low power conditions, please use the original USB cable to charge. When the power light is red, it means the device is charging, whereas green means the charging is finished.



Charging



Full Charged

Power on/off

Press ① the power button to turn on the device.

Press ② the power button to turn off the device.

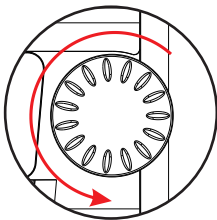
Attention:

1. When the device performs abnormally during using, it can be forcibly turned off by long pressing power button ② for.


2. The device can work 16 hours in normal temperature. When not using the device, please check whether the power is off or not, so as not to affect the operation next time.

Dioper adjustment


Adjust the eyepiece knob to focus on the target.



Electron Amplification

Short press the  to switch electron amplification times to 1X, 2X, 4X, 8X.

5.Imaging mode

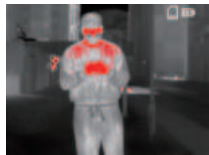
Short press the  to switch five imaging modes: red heat, black heat, white heat, green heat, and iron red.



White Heat



Black Heat



Red Heat



Iron Red




Green Heat

Photography

Short press the  to save the image to the inner memory card.


Image Export

After the device is connected to the computer through the USB cable, long press the  to turn on the device. At this time, the device is used as a mobile storage device. The computer automatically recognizes the device and can directly read the files on the device's memory card through the computer.

Hot spot tracking

After the device is turned on, it automatically turns on the hot spot tracking function in the 1X status. The hot spot icon is displayed on the screen to track the real time highest temperature point in the image.

Laser ranging

The device can be connected with an external laser ranging module (optional) to realize the ranging function. When the device is connected to the ranging module through a USB cable, turn on the power of the laser ranging module, and the device screen will display a cross cursor. Aim the cursor at the target; press the  button to measure the distance, and the target distance will be displayed on the screen.

External display

There is a 1/4-inch tripod interface at the bottom of the device, which can be connected to a hand-held screen stand (optional). After connecting the device with the external screen by the Mini HDMI cable, you can directly watch the device image on the external screen.

Technical parameter

| | |
|-------------------------|---|
| Infrared Resolution | 384x288 |
| Pixel Size | 17μm |
| NETD | <40mk |
| Lens Focal Length | 25mm(F1.0) |
| Field of view | 14.9° x 11.2° |
| Display | 800x600, OLED Screen |
| Detection Range | 400m |
| Electronic Zoom | 1X, 2X, 4X, 8X |
| Photograph | 800*600, BMP Format |
| Imaging Mode | Red Heat, Black Heat, White Heat, Green Heat, Iron Red |
| Diopter Adjustment | Support |
| Hot Spot Tracking | Support |
| Laser Ranging | Compatible |
| Operating Temperature | -20°C~60°C |
| Waterproof | IP65 |
| Battery | 4500mAh Li Battery |
| Charging/Data Interface | Type-C |
| Output | Support Mini HDMI, Micro SD (Maximum Expansion 32GB) |
| Size | 178.5x51x47mm |

Contact Us

Shenzhen Mileseey Technology Co., LTD.

Website: www.mileseeytools.com

Email: service@mileseey.com.

MILESEEY has started researching and development manufacturer of quality optical products including Golf rangefinder, laser measure device and binoculars since 2009.

Focus on the development, researching, and manufacturing for over 13 years.

We strive to provide you with premium qualified products and satisfying customer service to make your life easier and smarter.

Warranty

30-Day return and refund guarantee, 12-Month warranty, lifetime technique support by MILESEEY.

Please feel free to reach us with any concerns,

Email: service@mileseey.com.

We strive to reply to you within 24hours.