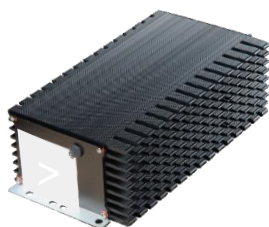




ELIPS 720 & 1500 for Industrial Vehicles*

Overview

- > On-board chargers with nominal power of 720 W or 1,500 W
- > Sealed design for high durability (water, dust, acid vapors)
- > Robust case against mechanical shocks and vibrations
- > Universal AC supply (85 to 265VAC)
- > Heat dissipation without internal fan
- > CANBUS link for communication (optional)
- > Thermal, short circuit, reverse polarity protections
- > Compatible with all battery types ((Lead, Lithium....))



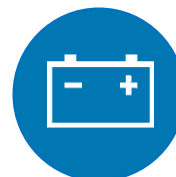
Sealed
design



Vibration
proof



Universal
AC input



All
battery Types

Main applications

- > Forklifts
- > Aerial Platforms
- > Utility Vehicles
- > Recreational Vehicles

Main features

With a compact design thanks to their high frequency electronics, the ELIPS720 & ELIPS1500 chargers are perfect for integration into industrial or leisure electric vehicles. Resisting high shock and vibrations, with a sealed enclosure, they have been designed to withstand harshest environment.

INPUT
Voltage: Universal 85 – 265V AC Single Phase
Mains Frequency 45 to 65 Hz
Power factor : > 0,99
Efficiency > 90%
OUTPUT
Voltage: 24V (ELIPS 720), 48V or 72V (ELIPS 1500)
Power: ELIPS720: 720W @230V, ELIPS1500: 1,500W @230V
Maximum current: 30 Amps
COMMUNICATION BUS
By serial port

ELECTRONIC PROTECTION
Overload and output short-circuit
Over temperature and temperature regulation
Output over voltage / reverse polarity
OPERATING TEMPERATURE
Temperature: -25°C to +40°C (50°C for ELIPS1500)
Relative Humidity: 10% to 100%
MECHANICAL FEATURES
Dimensions ELIPS720: H 74mm x L 253mm x W 126mm
Dimensions ELIPS1500: H 145mm x L 260mm x W 210mm
Index Protection: IP66 (ELIPS720) / IP65 (ELIPS1500)
Weight: 3 kg (ELIPS720) / 5 kg (ELIPS1500)

Programming

- Selection & Indicators:
- Charging curve: 4 positions
 - Light status indicators (by wire)

Standard compliance

- Safety: EN62368-1 / UL1564 (ELIPS720)
- EMC: EN 61000-6-2 / 6-4 / 3-2 / 3-3
- California Standards (ELIPS720)

